



AAPPCE



# Flujos de Emergencias de Malezas de Primavera y Verano en distintas localidades Productivas de Argentina.

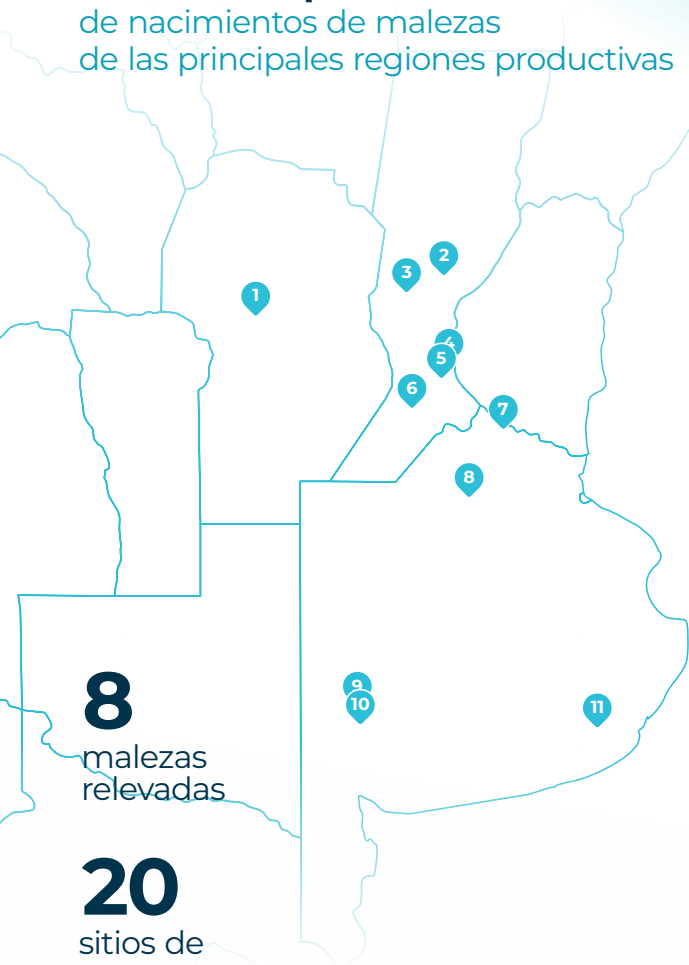
**Boletín 3**  
Ciclo 2024/25



**RedDIMA**  
Red de Dinámica  
de Malezas

## Recuentos quincenales

de nacimientos de malezas  
de las principales regiones productivas



### Córdoba

- 1 **COR** Corralito

### Santa Fe

- 2 **ESP** Esperanza
- 3 **SVI** San Vicente
- 4 **ALD** Aldao
- 5 **ZAV** Zavalla
- 6 **VIL** Villada

### Buenos Aires

- 7 **GCA** Gobernador Castro
- 8 **CHA** Chacabuco
- 9 **PIG** Pigüé
- 10 **SAV** Saavedra
- 11 **BAL** Balcarce

8

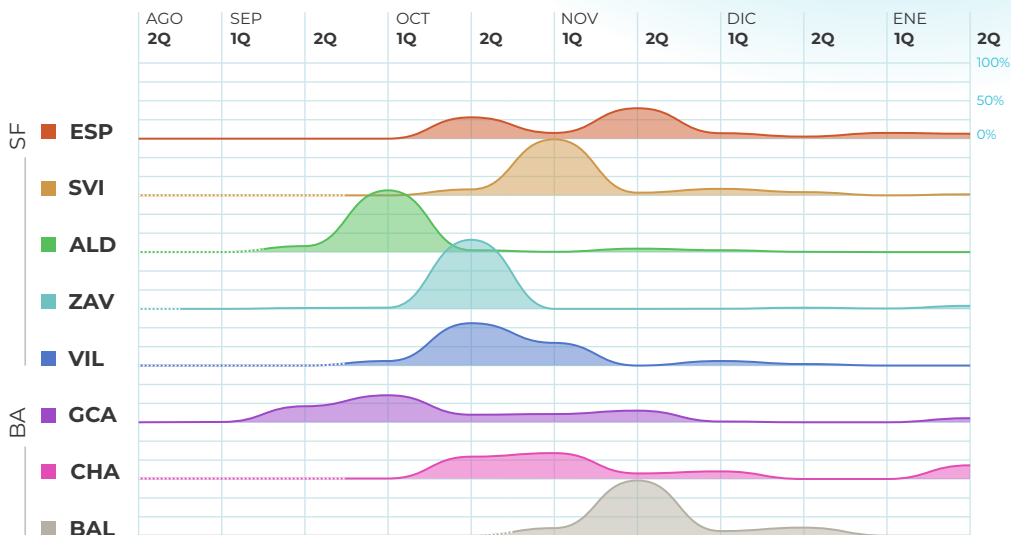
malezas  
relevadas

20

sitios de  
muestreos

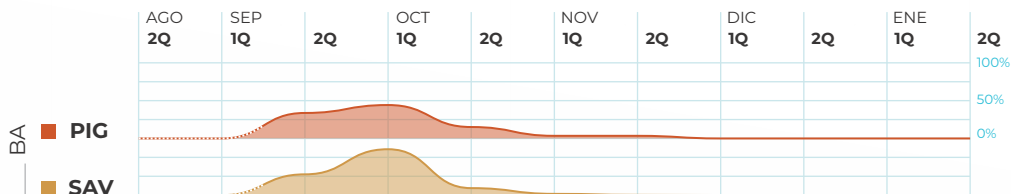


## **Amaranthus spp** \_ Yuyo colorado



Santa Fe 1. Esperanza / 2. San Vicente / 3. Aldao / 4. Zavalla / 5. Villada  
Buenos Aires 6. Gobernador Castro / 7. Chacabuco / 8. Balcarce

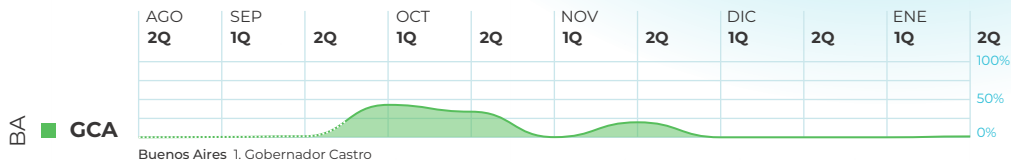
## **Bassia scoparia** \_ Morenita



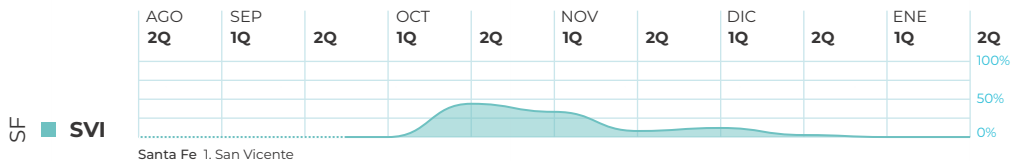
Buenos Aires 1. Pigüé / 2. Saavedra



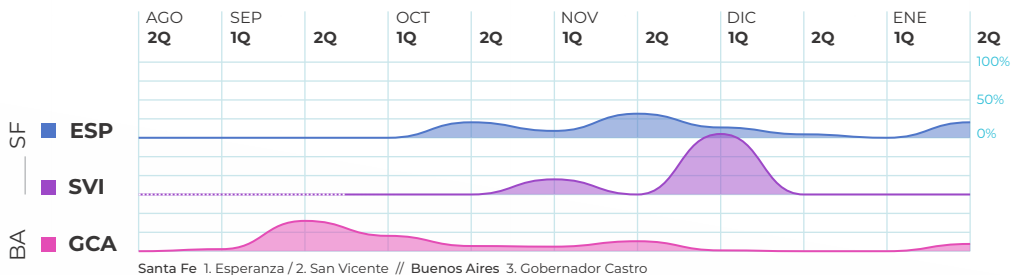
**Bidens spp** \_ Amor seco



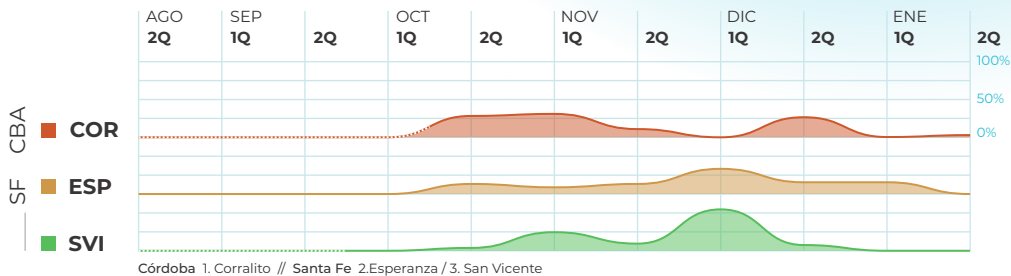
**Digitaria sanguinalis** \_ Pasto cuaresma



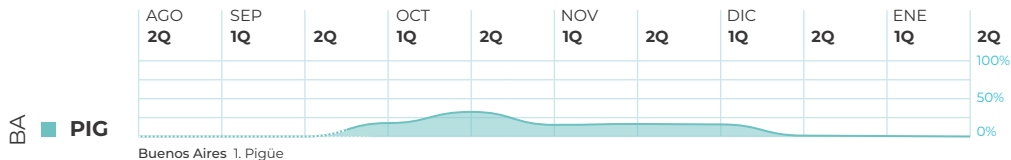
**Echinochloa colona** \_ Capín



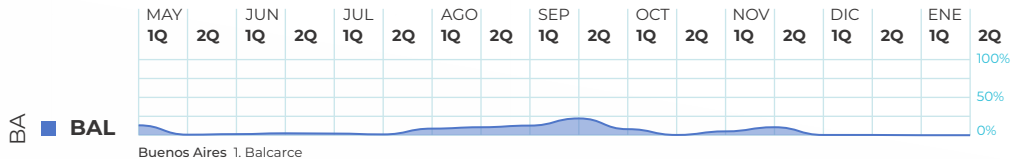
**Eleusine indica** \_ Pata de gallina



**Euphorbia dentata** \_ Lecherón



**Brassica rapa** \_ Nabo



# AUSPICIA



**CROP SOLUTIONS**



Seguí la **Curva**



**RedDIMA**

Red de Dinámica  
de **Malezas**



**AAPPCE**

[aappce.org/red-dima](http://aappce.org/red-dima)